



# MIPOLAM TROPLAN

[gerflor.com](http://gerflor.com)



**Gerflor**<sup>®</sup>  
theflooringgroup

# MIPOLAM TROPLAN



**1033 Brown**  
NCS: 3005-Y50R / LRV: 38,1



**1004 Earth**  
NCS: 2005-Y50R / LRV: 50,4



**1035 Ocre**  
NCS: 2020-Y30R / LRV: 48,2



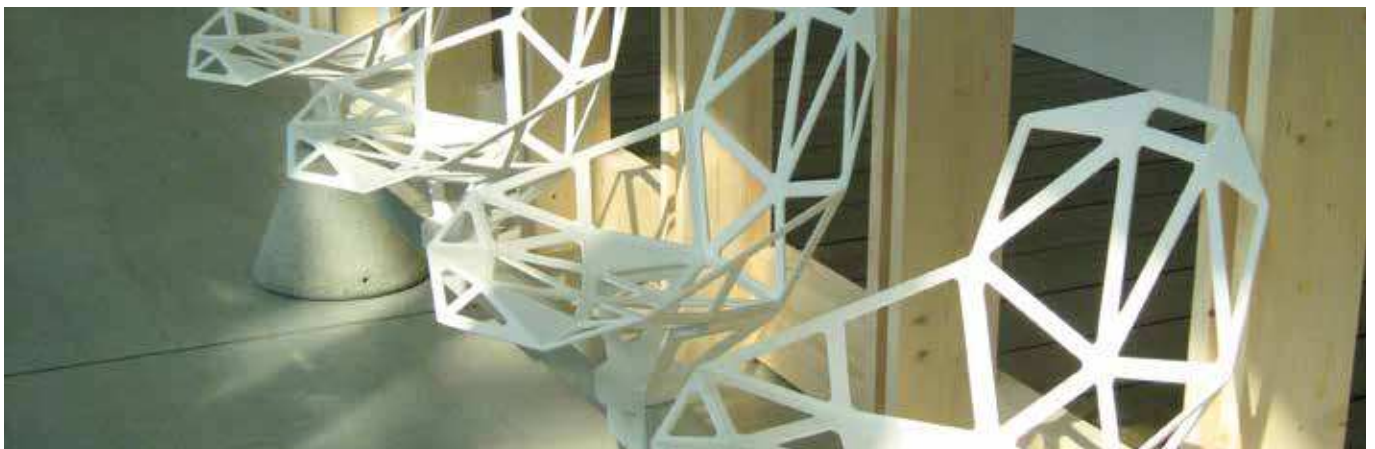
**1002 Beige**  
NCS: 1005-Y50R / LRV: 63,9



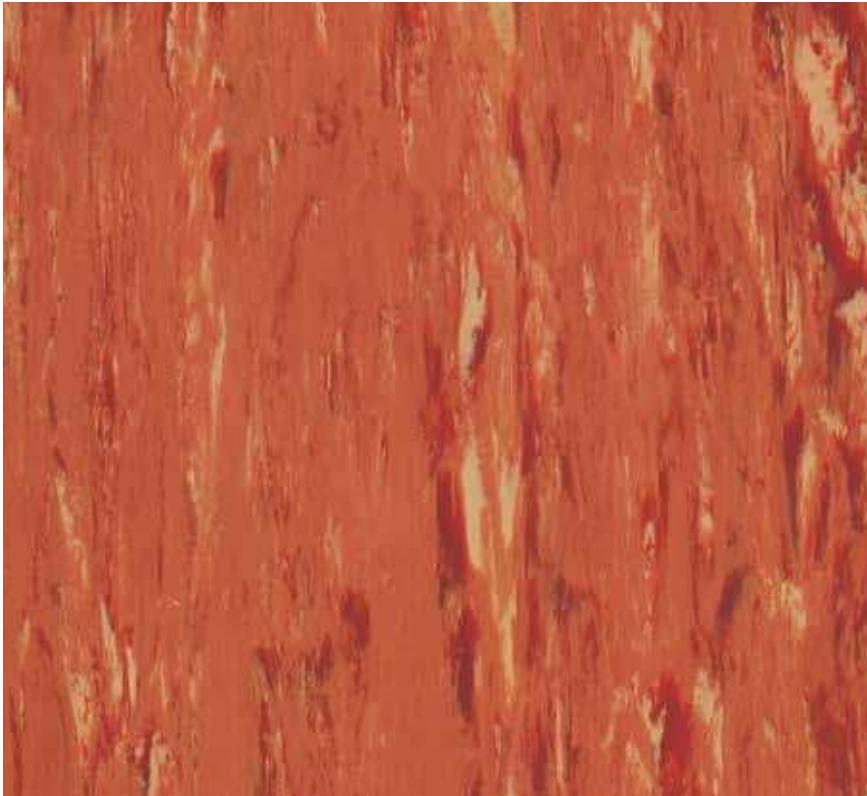
**1003 Light Ocre**  
NCS: 1010-Y30R / LRV: 57,9



**1032 Yellow**  
NCS: 2040-Y30R / LRV: 39,4



All colours available as 608 x 608 mm tiles upon request for a minimum order quantity of 500 sqm



**1055 Apricot**  
NCS: 3050-Y70R / LRV: 20,3



**1060 Anthracite**  
NCS: 6502-R / LRV: 20,1



**1040 Dark Grey**  
NCS: 5502-R / LRV: 29,5



**1009 Light Grey**  
NCS: 2000-N / LRV: 57,8



**1010 Grey**  
NCS: 3502-R / LRV: 45,6



**1059 Blue Grey**  
NCS: 5005-R80B / LRV: 27,2

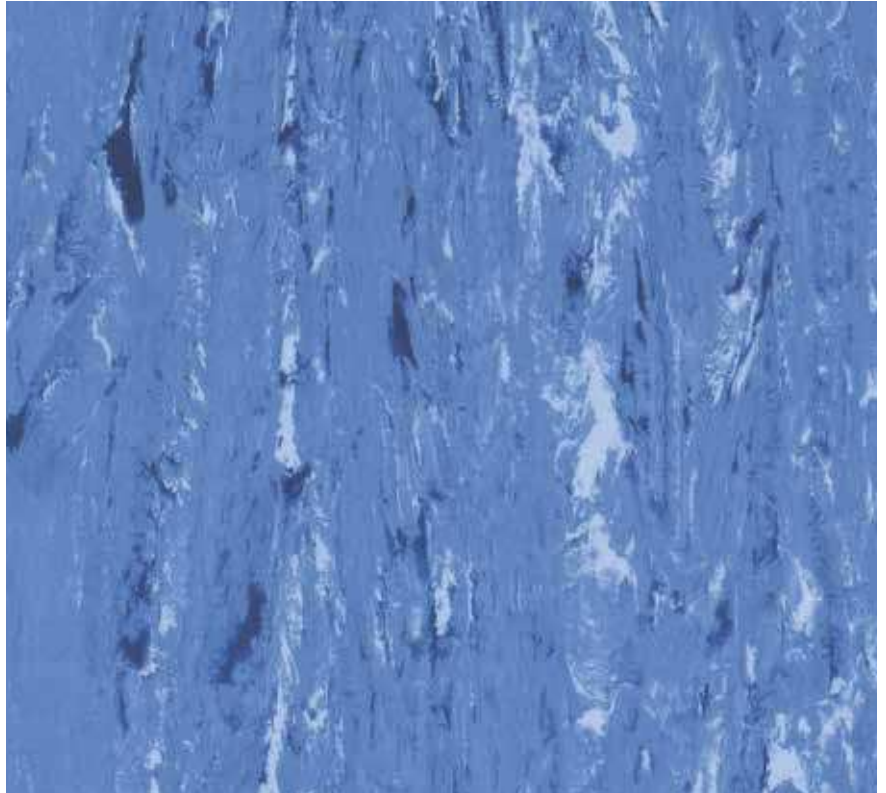




**1036 Medium Blue**  
NCS: 2030-R80B / LRV: 36,5



**1006 Blue**  
NCS: 2020-R80B / LRV: 46,1



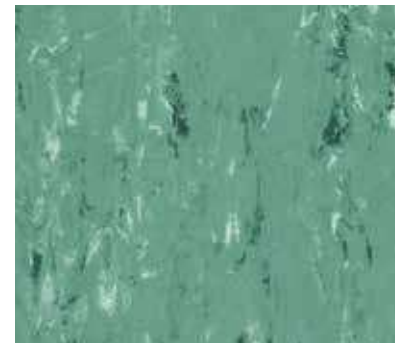
**1056 Dark Blue**  
NCS: 3040-R80B / LRV: 21,1



**1007 Green**  
NCS: 2010-G30Y / LRV: 46,3



**1037 Medium Green**  
NCS: 2030-B90G / LRV: 34,4



**1057 Dark Green**  
NCS: 4020-B90G / LRV: 28,9



# MIPOLAM TROPLAN

## Performances and benefits



Homogeneous vinyl flooring suitable for medium to heavy duty traffic areas



2 mm thickness



Directional design available in 18 references



Flexible, easy to install and to weld

Don't forget our complementary ranges!



Handrails



Wall Coverings & Protections



Entrance mats



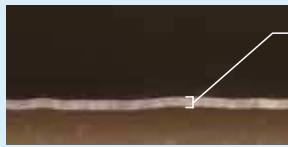
Skirtings & Profiles

## evercare™ SURFACE TREATMENT

EXCLUSIVE PATENTED TECHNOLOGY BY GERFLOR

### THE BEST CHEMICAL STAIN RESISTANCE SURFACE TREATMENT

evercare™ BY GERFLOR : Treatment durability



Gerflor:  
Even thickness



100% non-porous surface  
Water-repellent effect

Other treated floor covering



Competitor:  
Missing treatment and uneven thickness



Non-treated product

### SIMPLE & EASY STAIN REMOVAL



### USER'S BENEFITS

- | Easy maintenance
- | Stain barrier
- | Chemical resistance

- | No wax for life
- | Cost-effective maintenance
  - 80% less water and detergent use for cleaning
  - 30% savings on maintenance costs

MIPOLAM TROPLAN

DESCRIPTION

Total Thickness	EN ISO 24346 [EN 428]	mm	2.0
	ASTM F386-02	inch	0.08
Weight	EN ISO 23997 [EN 430]	g/sq.m	3300
Width/Length of Sheet	EN ISO 24341 [EN 426]	cm/lm	200 / 20
	-	Feet-inch	6'6" / 66'
Tile size	EN ISO 24342 [EN 427]	mm	608 x 608
Number of tiles per box	-	-	20

CLASSIFICATION

Norm/Product Specification	-	-	EN ISO 10581 [EN 649]
	ASTM F 1913-04	-	compliant
<b>European classification</b>	<b>EN ISO 10874 [EN 685]</b>	<b>class</b>	<b>34-43</b>
<b>Classement UPEC</b>	<b>NF 189</b>	<b>classement</b>	<b>U4P3E2/3C2</b>
<b>Certification</b>	<b>NF 189</b>	<b>n° certificat</b>	<b>332-001.1</b>
Fire rating	EN 13 501-1	class	Bfl-s1
	ASTM E648-08	class	Class I
	CAN /ULCS102.2	-	tested in accordance
Static electrical propensity	EN 1815	kV	< 2
Slip resistance wet	DIN 51130	class	R9

PERFORMANCE

Wear resistance	EN 660.2	mm <sup>3</sup>	≤ 7.5
Wear group	NF 189	group	M
Type binder content	EN ISO 10581	type	II
Dimensional stability	EN ISO 23999 [EN 434]	%	sheet ≤ 0.40 / tile ≤ 0.25
Impact sound insulation	EN ISO 717-2	dB	4
Residual indentation	EN ISO 24343-1 [EN 433]	mm	≈ 0.03
Castor chair test (type W)	ISO 4918 [EN 425]	-	OK
Thermal conductivity	EN ISO 10456 [EN 12524]	W/(m.K)	0.25
Colour fastness	EN 20 105-B02	degree	≥ 6
Surface treatment	-	-	Evercare™
Chemical products resistance <sup>(1)</sup>	EN ISO 26987 [EN 423]	class	OK
Anti-bacterial activity [E. coli – S.aureus – MRSA] <sup>(2)</sup>	EN ISO 26987 [EN 423]	class	> 99 % inhibits growth

ENVIRONMENT / INDOOR AIR QUALITY

TVOC after 28 days	ISO 16000-6	µg/ m <sup>3</sup>	< 10
Certification	-	-	Floorscore®

CE MARKING

	EN 14041	-	

- (1) Regarding the resistance to chemicals, please download the corresponding leaflet from our website.
- (2) The implementation of an effective cleaning method is the best defence against infection.

Installation and Maintenance Guidelines, Complementary ranges available on our Gerflor website.



Rubber leaves indelible stains on vinyl floorings: do not use mats with rubber backing and replace tubular furniture feet with those made of PVC or polyamide. Place mats of sufficient length at entrances to reduce outside sources of dirt.

**IMPORTANT:** The information contained in this document is valid from 1/05/2018 and is subject to change at any time without notice. In the context of constantly changing technology, our customers are responsible, prior to any use, for checking with us that this document is the version in force.

Product description and technical data sheet available in various languages. See our Gerflor Country websites.

## MIPOLAM TROPLAN, LESS SPEAKING FOR MORE ACTIONS

 <b>COMPOSITION</b> 100% REACH compliant	 <b>INDOOR AIR QUALITY</b> 100 times lower than norms requirements (TVOC < 10 ug/m <sup>3</sup> after 28 days)	 <b>RECYCLED CONTENT</b> 25%	 <b>RECYCLABILITY</b> 100%	 <b>LCA</b> Eco-designed according to a product specific life cycle analysis	 <b>WELLNESS</b> Walking comfort < 75 dB
--	--	------------------------------------	----------------------------------	--	--

**Gerflor** Be connected!

[www.gerflor.com](http://www.gerflor.com)

[www.gerflor.com](https://www.gerflor.com)

#Gerflor